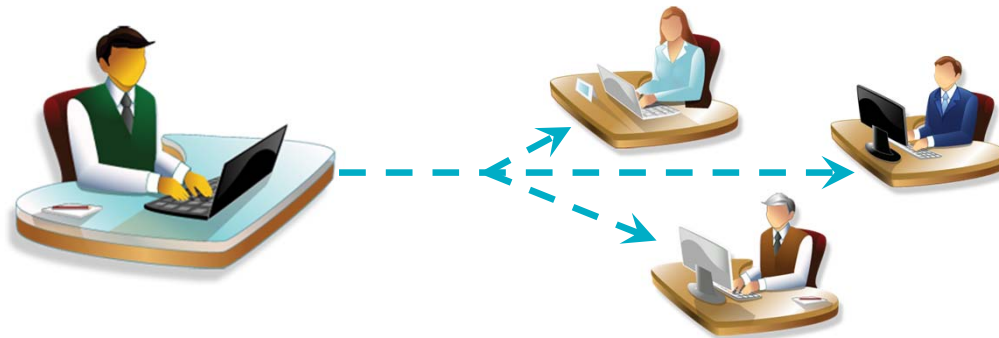


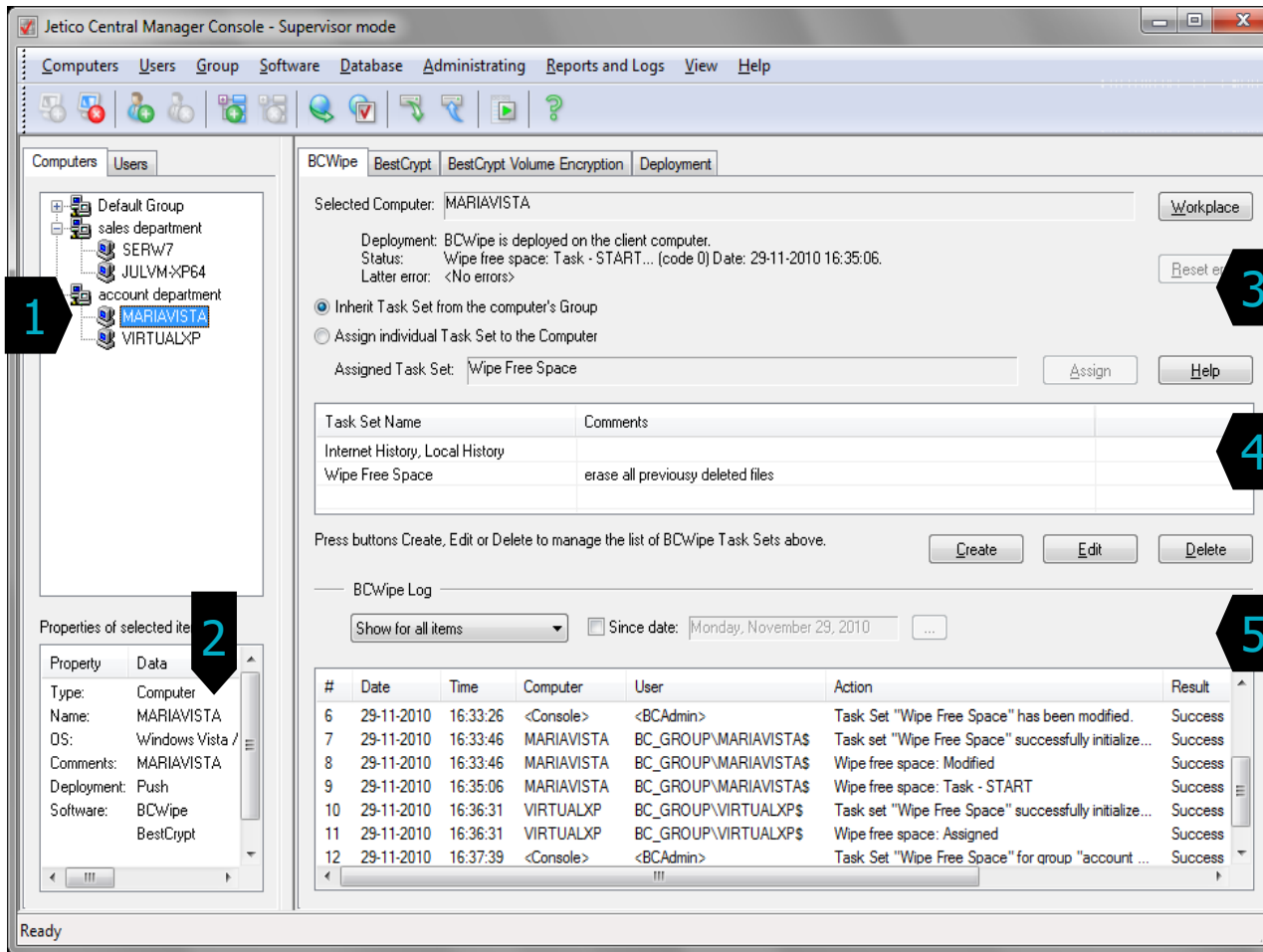


## BCWipe – Enterprise Edition

Demo Presentation:  
Jetico Central Manager Console

- > Included in Enterprise Editions of Jetico software (BCWipe – Enterprise Edition)
- > Actively control Jetico's BCWipe throughout your enterprise network with a flexible, unified administration tool
- > Take command of all wiping functions:
  - Remotely Deploy and Install
  - Configure and Assign BCWipe wiping tasks
  - Modify existing BCWipe wiping tasks on a single computer or on multiple computers simultaneously
  - View and Store logs in central database; create HTML reports





Jetico Central Manager Console - Supervisor mode

Computers Users Group Software Database Administrating Reports and Logs View Help

Computers Users

Default Group  
sales department  
SERW7  
JULVM>XP64  
account department  
**MARIAVISTA**  
VIRTUALXP

1

Properties of selected item

2

Property Data

Type: Computer  
Name: MARIAVISTA  
OS: Windows Vista /  
Comments: MARIAVISTA  
Deployment: Push  
Software: BCWipe  
BestCrypt

BCWipe BestCrypt BestCrypt Volume Encryption Deployment

Selected Computer: MARIAVISTA Workplace

Deployment: BCWipe is deployed on the client computer.  
Status: Wipe free space: Task - START... (code 0) Date: 29-11-2010 16:35:06.  
Latter error: <No errors> Reset

3

Inherit Task Set from the computer's Group  
 Assign individual Task Set to the Computer

Assigned Task Set: Wipe Free Space Assign Help

4

| Task Set Name                   | Comments                           |
|---------------------------------|------------------------------------|
| Internet History, Local History |                                    |
| Wipe Free Space                 | erase all previously deleted files |

Press buttons Create, Edit or Delete to manage the list of BCWipe Task Sets above. Create Edit Delete

BCWipe Log

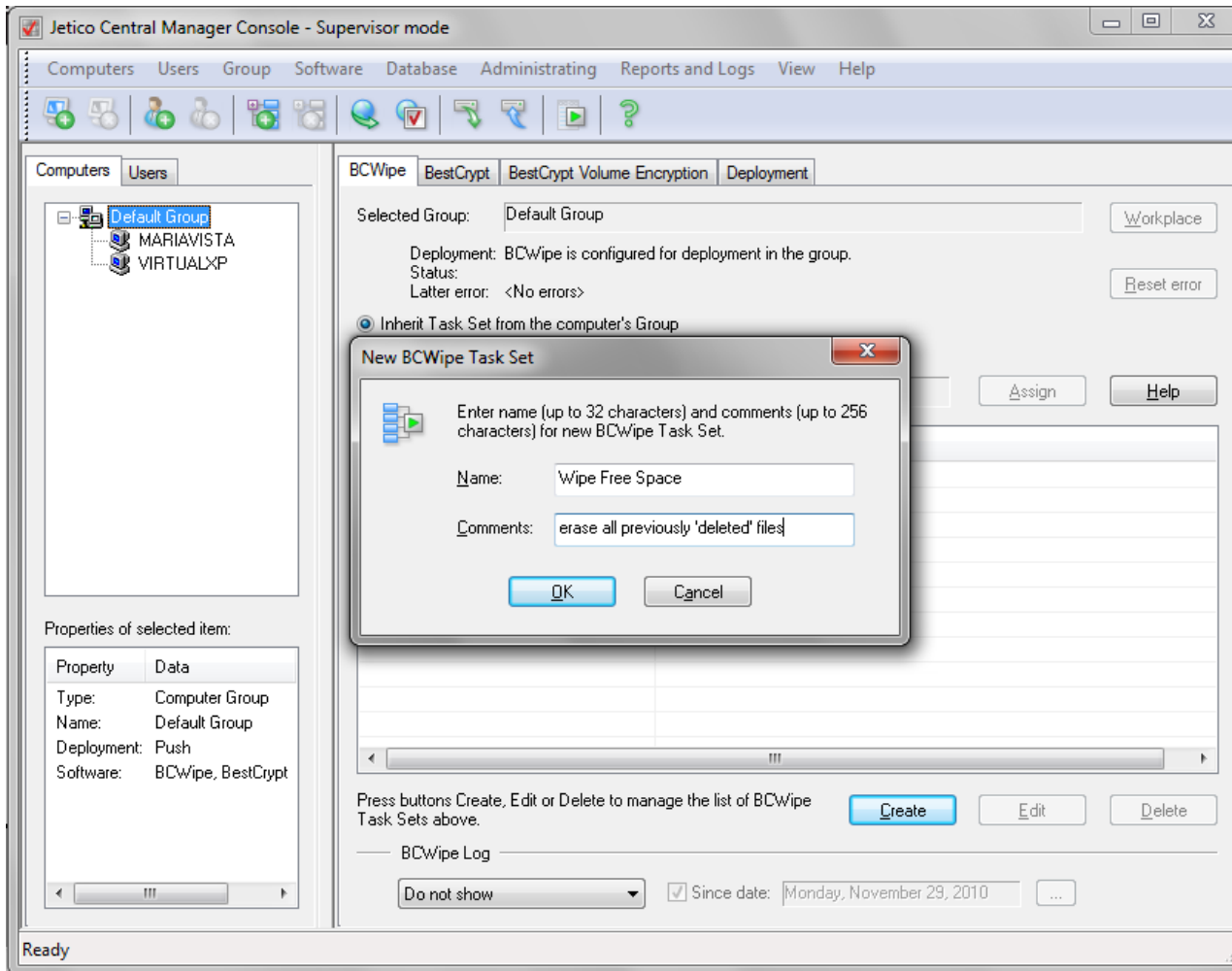
Show for all items  Since date: Monday, November 29, 2010 ...

5

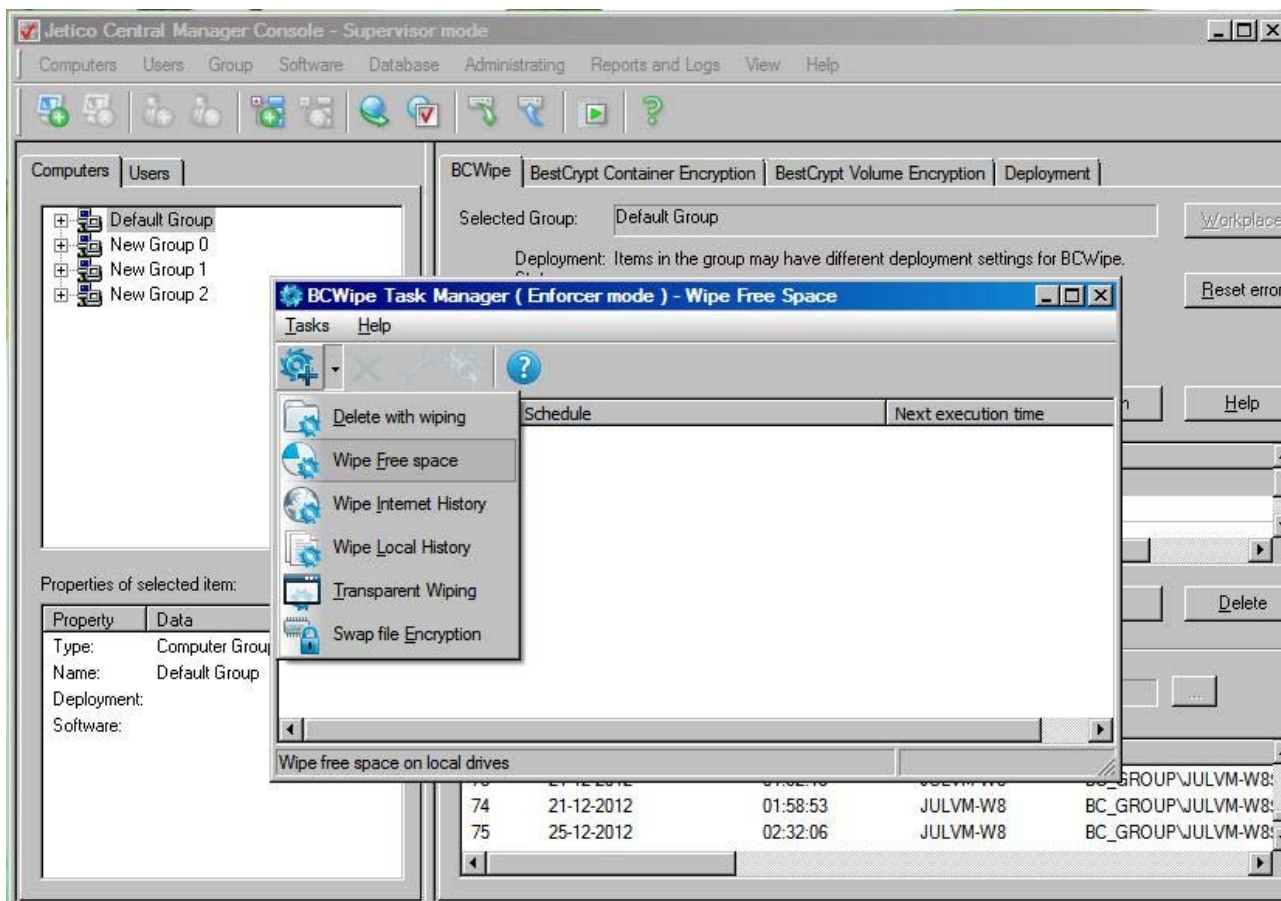
| #  | Date       | Time     | Computer   | User                  | Action  | Result  |
|----|------------|----------|------------|-----------------------|---|---------|
| 6  | 29-11-2010 | 16:33:26 | <Console>  | <BCAdmin>             | Task Set "Wipe Free Space" has been modified.         | Success |
| 7  | 29-11-2010 | 16:33:46 | MARIAVISTA | BC_GROUP\MARIAVISTA\$ | Task set "Wipe Free Space" successfully initialize... | Success |
| 8  | 29-11-2010 | 16:33:46 | MARIAVISTA | BC_GROUP\MARIAVISTA\$ | Wipe free space: Modified                             | Success |
| 9  | 29-11-2010 | 16:35:06 | MARIAVISTA | BC_GROUP\MARIAVISTA\$ | Wipe free space: Task - START                         | Success |
| 10 | 29-11-2010 | 16:36:31 | VIRTUALXP  | BC_GROUP\VIRTUALXP\$  | Task set "Wipe Free Space" successfully initialize... | Success |
| 11 | 29-11-2010 | 16:36:31 | VIRTUALXP  | BC_GROUP\VIRTUALXP\$  | Wipe free space: Assigned                             | Success |
| 12 | 29-11-2010 | 16:37:39 | <Console>  | <BCAdmin>             | Task Set "Wipe Free Space" for group "account ...     | Success |

Ready

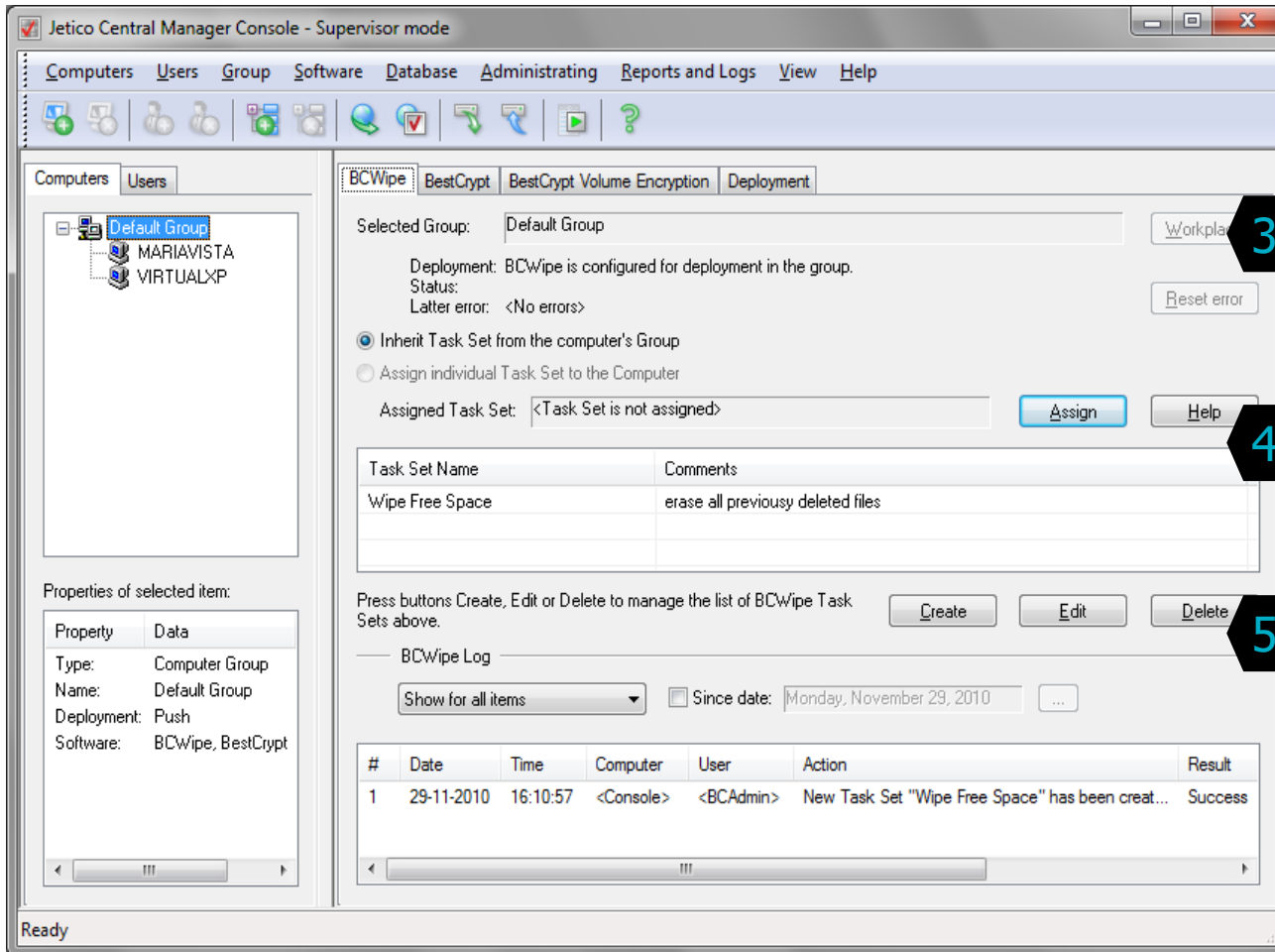
- > 1 - Groups of computers on the network
- > 2 - Displays properties extracted from selected computer or Group
- > 3 - Interface to assign Task Set to selected computer or Group
- > 4 - Pool of Task Sets
- > 5 - Log details for this client software (BCWipe)



- > Click **Create** to configure BCWipe Task Set to be assigned
  - > Here the Admin is creating tasks to be assigned to the entire Group of computers
  - > Unique tasks may be assigned to selected individual computers
- > Type 'Name' and any 'Comments' for each created Task Set



- > BCWipe Task Manager window opens to configure wiping tasks
  - > Multiple BCWipe operations can be added to the same Task Set
    - all BCWipe wiping operations are displayed in the drop down menu
  - > Here the Admin is configuring a Task Set to Wipe Free Space



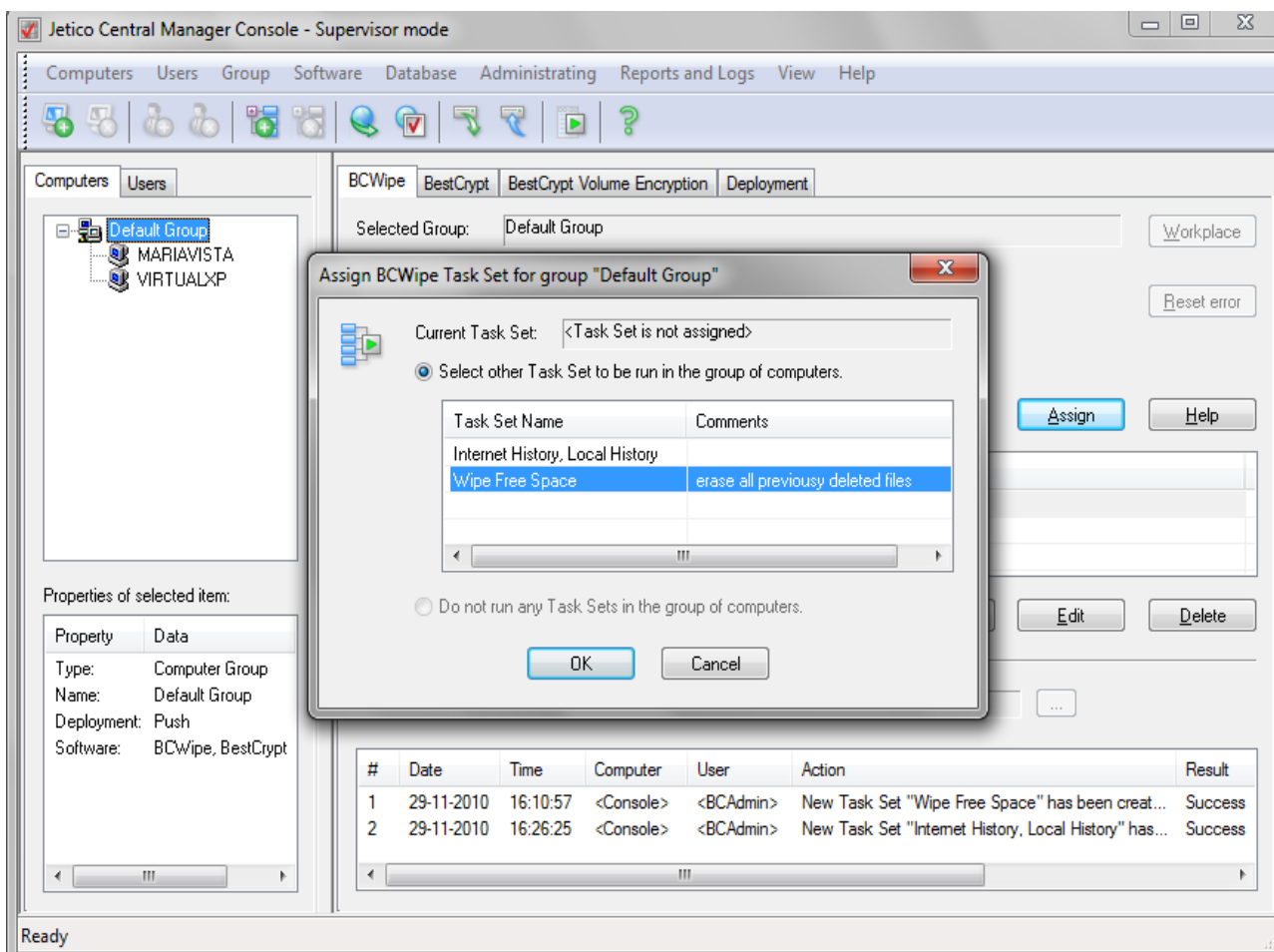
> Created Task Set displayed in the list in Section 4

> In Section 3 the Admin is assigning this Task Set to selected computer or Group

> Log details automatically displayed in Section 5

> Logs of wiping operations on endpoints also displayed here

> Assign Task Set for selected computer or Group



The screenshot shows the Jetico Central Manager Console in Supervisor mode. The 'BCWipe' tab is active, and the 'Default Group' is selected. A dialog box titled 'Assign BCWipe Task Set for group "Default Group"' is open, allowing the user to assign a task set to the group. The dialog shows a table of available task sets, with 'Wipe Free Space' selected. Below the dialog, a log table shows the successful creation of the task sets.

| Property    | Data              |
|-------------|-------------------|
| Type:       | Computer Group    |
| Name:       | Default Group     |
| Deployment: | Push              |
| Software:   | BCWipe, BestCrypt |

| # | Date       | Time     | Computer  | User      | Action  | Result  |
|---|------------|----------|-----------|-----------|---|---------|
| 1 | 29-11-2010 | 16:10:57 | <Console> | <BCAdmin> | New Task Set "Wipe Free Space" has been creat...      | Success |
| 2 | 29-11-2010 | 16:26:25 | <Console> | <BCAdmin> | New Task Set "Internet History, Local History" has... | Success |



# JCM Console: BCWipe Tab – Review Results

> In this example,  
Task Set assigned  
for Default Group is  
'Wipe Free Space'  
(Section 3)

Jetico Central Manager Console - Supervisor mode

Computers Users Group Software Database Administrating Reports and Logs View Help

Computers Users

Default Group  
MARIAVISTA  
VIRTUALXP

Properties of selected item:

| Property    | Data              |
|-------------|-------------------|
| Type:       | Computer Group    |
| Name:       | Default Group     |
| Deployment: | Push              |
| Software:   | BCWipe, BestCrypt |

Selected Group: Default Group [Workplace]

Deployment: BCWipe is configured for deployment in the group.  
Status:  
Latter error: <No errors> [Reset error]

Inherit Task Set from the computer's Group  
 Assign individual Task Set to the Computer

Assigned Task Set: Wipe Free Space [Assign] [Help]

| Task Set Name                   | Comments                           |
|---------------------------------|------------------------------------|
| Internet History, Local History |                                    |
| Wipe Free Space                 | erase all previously deleted files |

Press buttons Create, Edit or Delete to manage the list of BCWipe Task Sets above. [Create] [Edit] [Delete]

BCWipe Log

Show for all items [v]  Since date: Monday, November 29, 2010 [...]

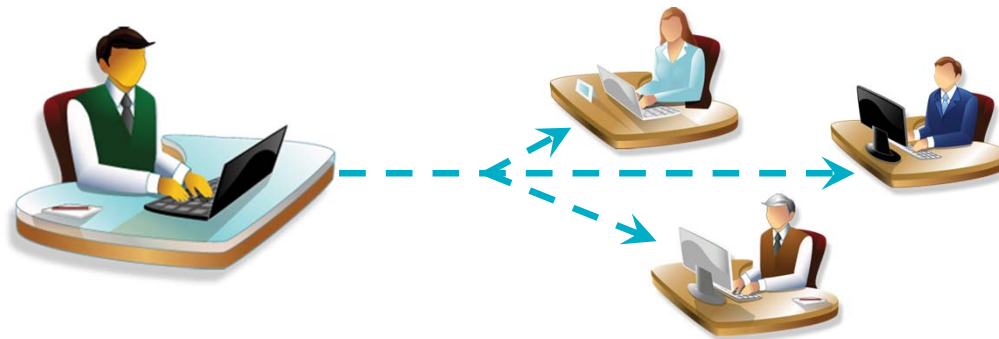
| # | Date       | Time     | Computer   | User      | Action                    | Re |
|---|------------|----------|------------|-----------|---------------------------|----|
| 5 | 29-11-2010 | 16:29:55 | MARIAVI... | BC_GRO... | Wipe free space: Assigned | Su |

Ready



# Jetico | Jetico Central Manager

- > Flexible & convenient tool
- > Improves reliability & security immediately
- > Reduces TCO by 60% over 3 years
- > Supreme peace of mind
  - Sensitive data protected properly throughout enterprise network
  - Policies enforced
  - Compliance requirements met





## Jetico Technical Support

- > For most effective service, please contact Jetico Technical Support through our online contact form:

[www.jetico.com/support-contact-jetico-technical-support](http://www.jetico.com/support-contact-jetico-technical-support)

- > You may also contact Jetico Technical Support via email at: [tech\\_support@jetico.com](mailto:tech_support@jetico.com)



## For more information

Phone (Europe): +358.92.517.3030

Phone (U.S.): 1.202.742.2901

[enterprise\\_sales@jetico.com](mailto:enterprise_sales@jetico.com)

[www.jetico.com](http://www.jetico.com)