

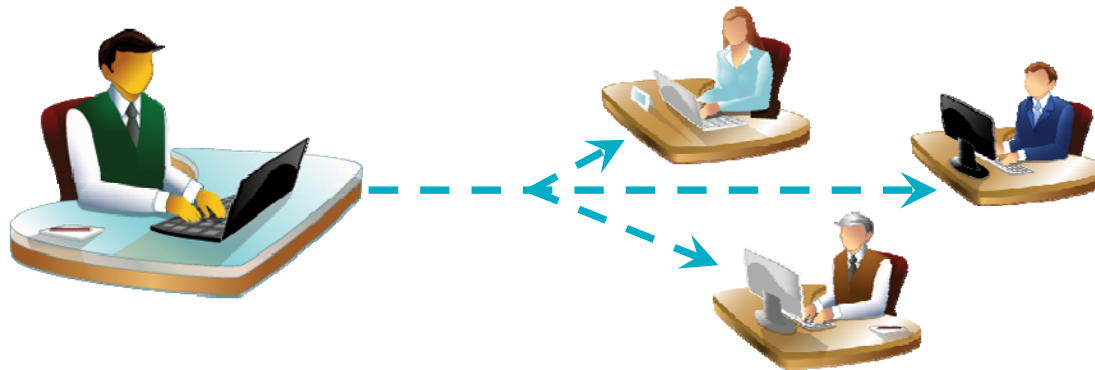


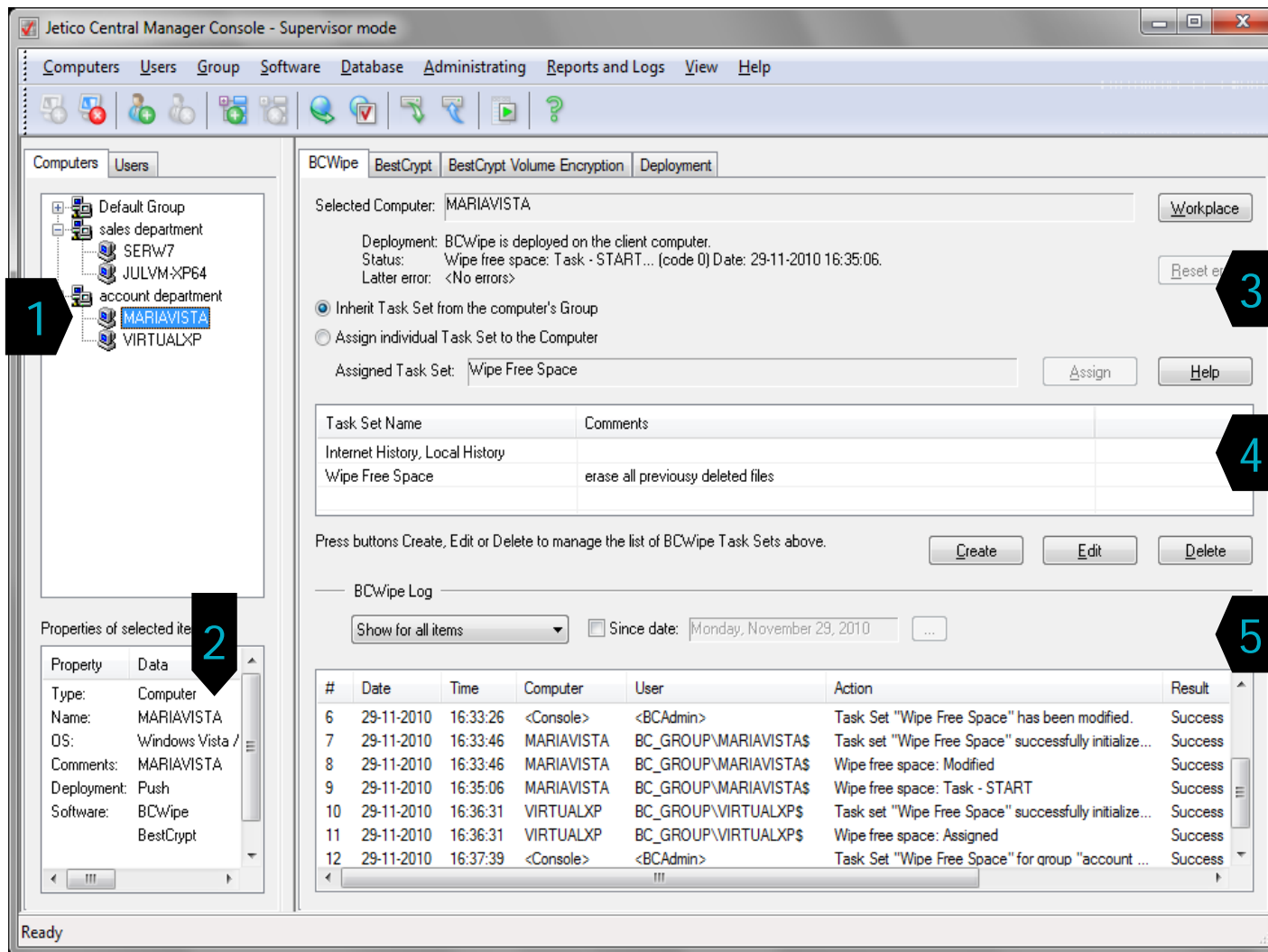
BCWipe – Enterprise Edition

Demo Presentation:
Jetico Central Manager Console

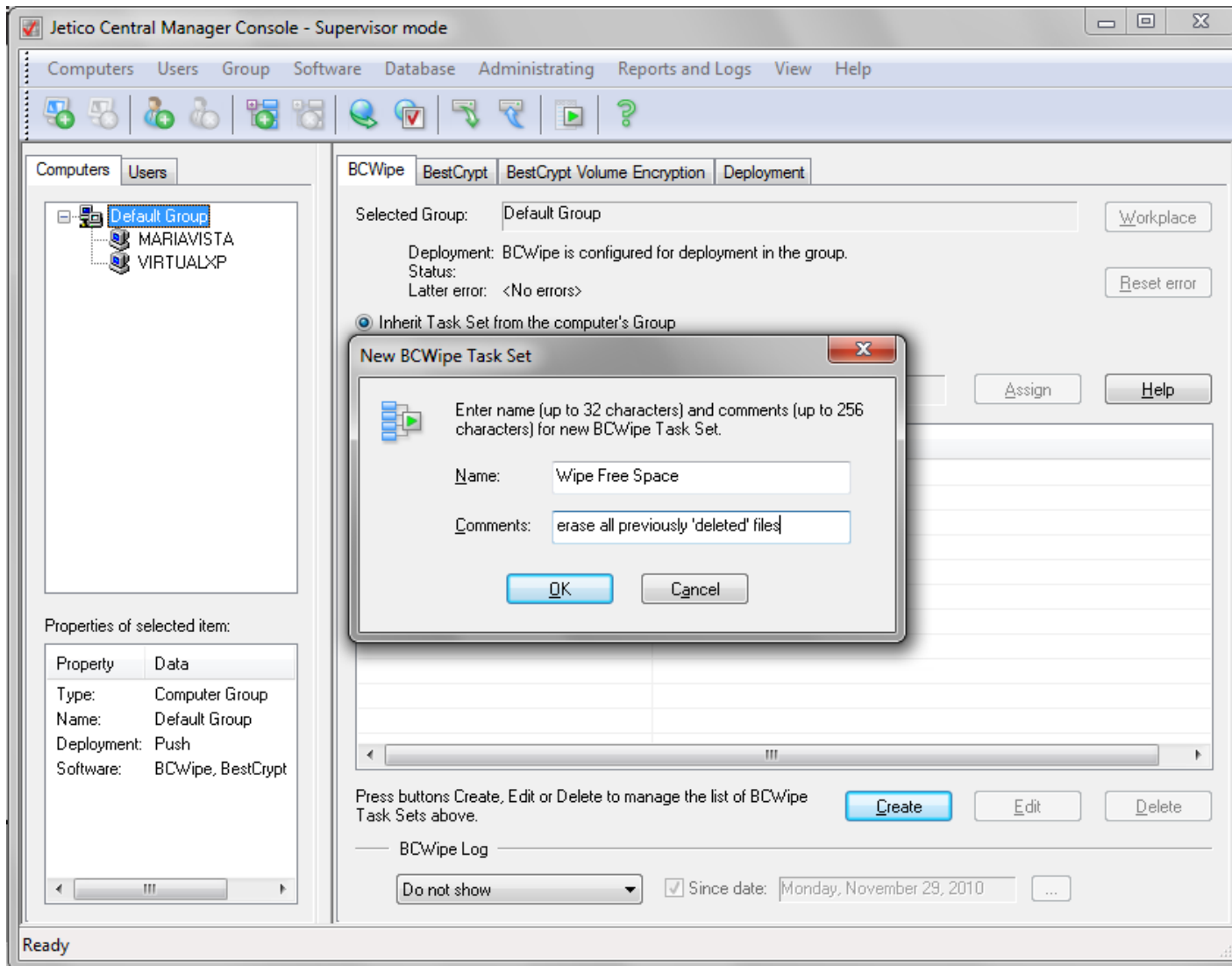
Protection made perfect.

- > Included in Enterprise Editions of Jetico software (BCWipe – Enterprise Edition)
- > Actively control Jetico's BCWipe throughout your enterprise network with a flexible, unified administration tool
- > Take command of all wiping functions:
 - Remotely Deploy and Install
 - Configure and Assign BCWipe wiping tasks
 - Modify existing BCWipe wiping tasks on a single computer or on multiple computers simultaneously
 - View and Store logs in central database; create HTML reports

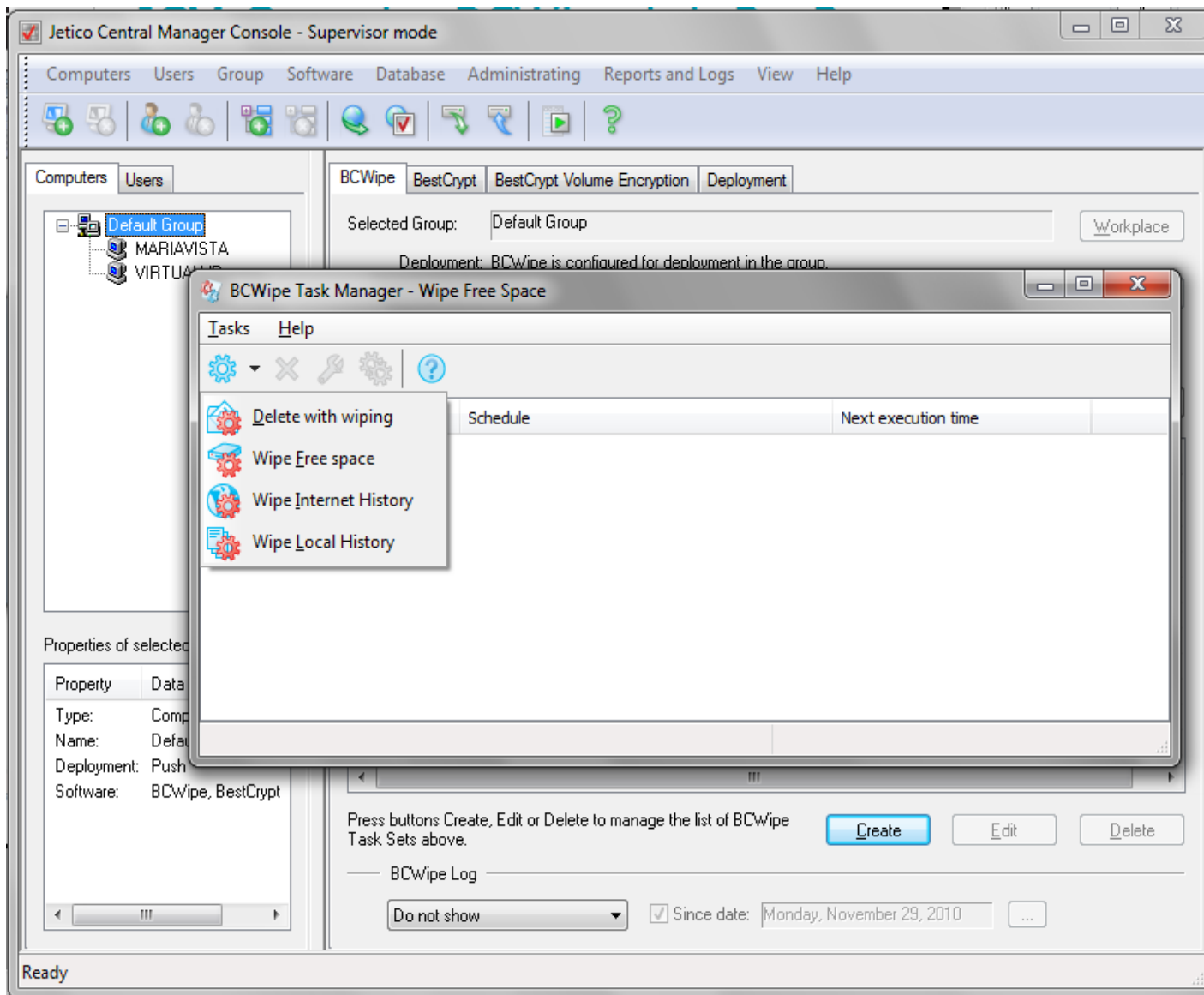




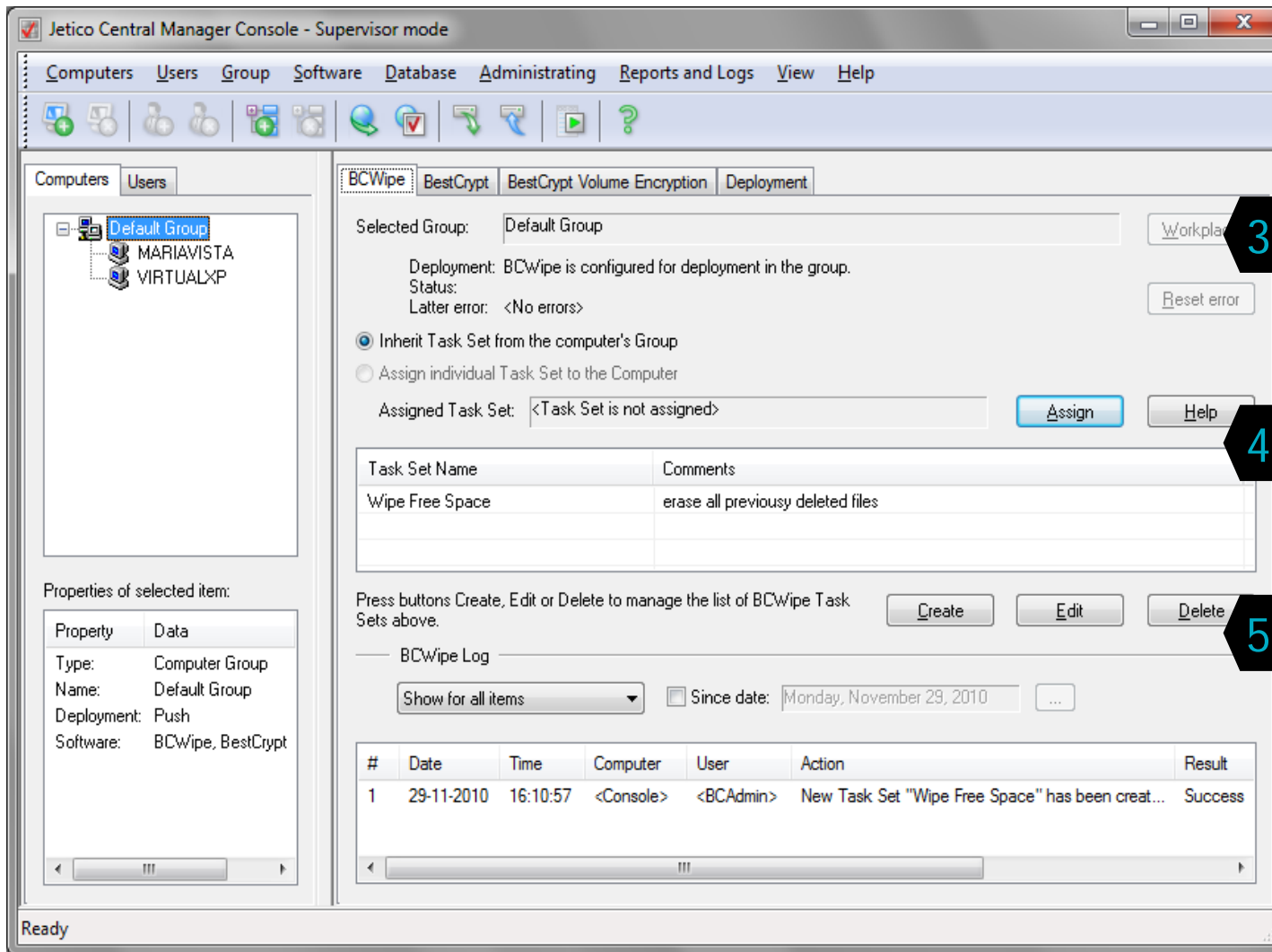
- > 1 - Groups of computers on the network
- > 2 - Displays properties extracted from selected computer or Group
- > 3 - Interface to assign Task Set to selected computer or Group
- > 4 - Pool of Task Sets
- > 5 - Log details for this client software (BCWipe)



- > Click **Create** to configure BCWipe Task Set to be assigned
 - > Here the Admin is creating tasks to be assigned to the entire Group of computers
 - > Unique tasks may be assigned to selected individual computers
- > Type 'Name' and any 'Comments' for each created Task Set



- > BCWipe Task Manager window opens to configure wiping tasks
- > Multiple BCWipe operations can be added to the same Task Set
 - all BCWipe wiping operations are displayed in the drop down menu
- > Here the Admin is configuring a Task Set to Wipe Free Space



Jetico Central Manager Console - Supervisor mode

Computers Users Group Software Database Aministrating Reports and Logs View Help

BCWipe | BestCrypt | BestCrypt Volume Encryption | Deployment

Selected Group: Default Group Workpla... 3

Deployment: BCWipe is configured for deployment in the group.
Status:
Latter error: <No errors> Reset error

Inherit Task Set from the computer's Group
 Assign individual Task Set to the Computer

Assigned Task Set: <Task Set is not assigned> Assign Help 4

Task Set Name	Comments
Wipe Free Space	erase all previously deleted files

Press buttons Create, Edit or Delete to manage the list of BCWipe Task Sets above. Create Edit Delete 5

BCWipe Log

Show for all items Since date: Monday, November 29, 2010 ...

#	Date	Time	Computer	User	Action	Result
1	29-11-2010	16:10:57	<Console>	<BCAdmin>	New Task Set "Wipe Free Space" has been creat...	Success

Ready

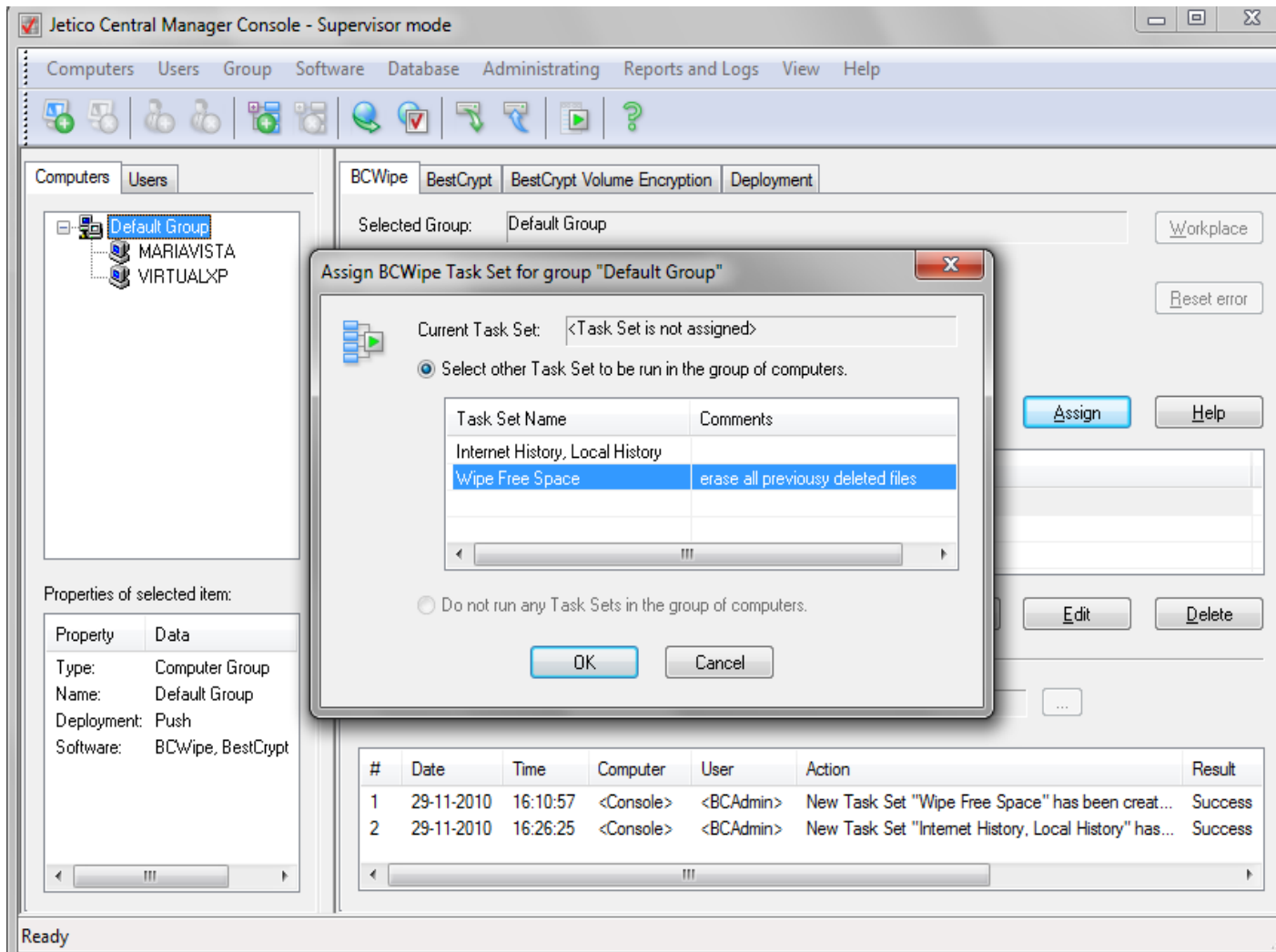
> Created Task Set displayed in the list in Section 4

> In Section 3 the Admin is assigning this Task Set to selected computer or Group

> Log details automatically displayed in Section 5

> Logs of wiping operations on endpoints also displayed here

> Assign Task Set for selected computer or Group



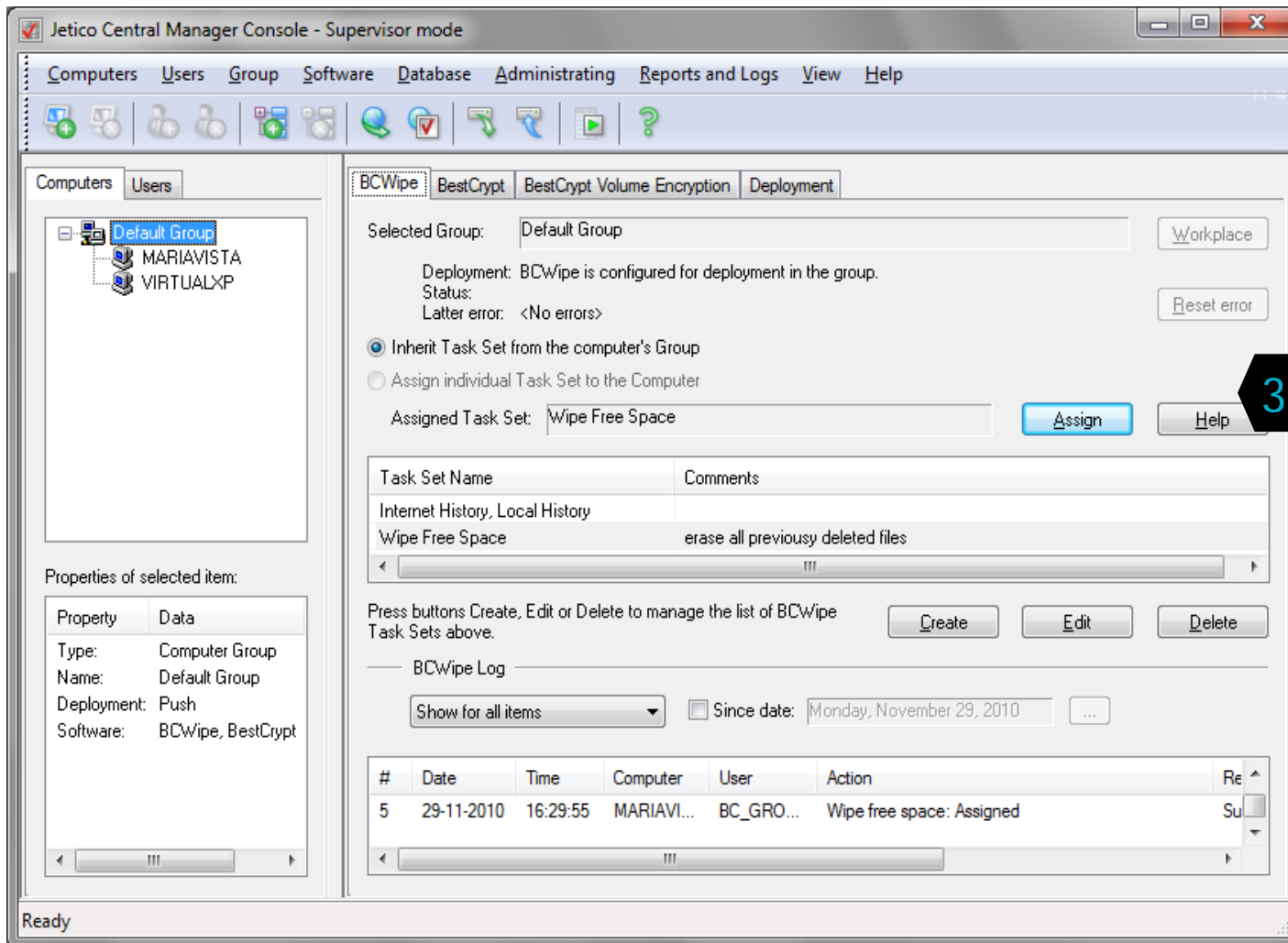
The screenshot shows the Jetico Central Manager Console in Supervisor mode. The main window displays the BCWipe tab for the 'Default Group'. A dialog box titled 'Assign BCWipe Task Set for group "Default Group"' is open, allowing the user to select a task set. The dialog shows a table of available task sets:

Task Set Name	Comments
Internet History, Local History	
Wipe Free Space	erase all previously deleted files

The 'Wipe Free Space' task set is currently selected. Below the table, there are radio buttons for 'Select other Task Set to be run in the group of computers.' (which is selected) and 'Do not run any Task Sets in the group of computers.'.

At the bottom of the console, a log table shows the following entries:

#	Date	Time	Computer	User	Action	Result
1	29-11-2010	16:10:57	<Console>	<BCAdmin>	New Task Set "Wipe Free Space" has been creat...	Success
2	29-11-2010	16:26:25	<Console>	<BCAdmin>	New Task Set "Internet History, Local History" has...	Success



Jetico Central Manager Console - Supervisor mode

Computers Users Group Software Database Administrating Reports and Logs View Help

Computers Users

Default Group
MARIAVISTA
VIRTUALXP

Properties of selected item:

Property	Data
Type:	Computer Group
Name:	Default Group
Deployment:	Push
Software:	BCWipe, BestCrypt

BCWipe BestCrypt BestCrypt Volume Encryption Deployment

Selected Group: Default Group Workplace

Deployment: BCWipe is configured for deployment in the group.
Status:
Latter error: <No errors> Reset error

Inherit Task Set from the computer's Group
 Assign individual Task Set to the Computer

Assigned Task Set: Wipe Free Space Assign Help

Task Set Name	Comments
Internet History, Local History	
Wipe Free Space	erase all previously deleted files

Press buttons Create, Edit or Delete to manage the list of BCWipe Task Sets above. Create Edit Delete

BCWipe Log

Show for all items Since date: Monday, November 29, 2010

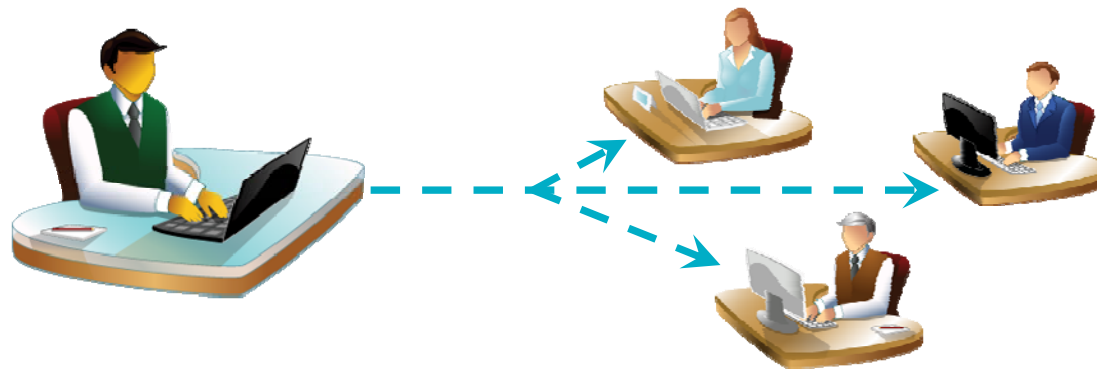
#	Date	Time	Computer	User	Action	Re
5	29-11-2010	16:29:55	MARIAVI...	BC_GRO...	Wipe free space: Assigned	Su

Ready

> In this example, Task Set assigned for Default Group is 'Wipe Free Space' (Section 3)

3

- > Flexible & convenient tool
- > Improves reliability & security immediately
- > Reduces TCO by 60% over 3 years
- > Supreme peace of mind
 - Sensitive data protected properly throughout enterprise network
 - Policies enforced
 - Compliance requirements met





Jetico Technical Support

- > For most effective service, please contact Jetico Technical Support through our online contact form:

www.jetico.com/support-contact-jetico-technical-support

- > You may also contact Jetico Technical Support via email at: tech_support@jetico.com



For more information

Phone (Europe): +358.92.517.3030

Phone (U.S.): 1.202.742.2901

enterprise_sales@jetico.com

www.jetico.com

Protection made perfect.